

## Pilot-Membrane-Testplant PSta I 5

### Microfiltration up to Reverse Osmosis

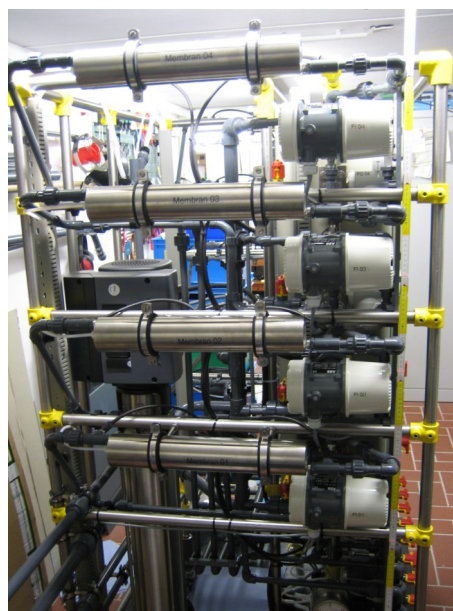


Figure I: PSta I 5 - Example with eight modules in smallest space

#### Performance data and structure of PSta I 5:

- wide trial dynamic for feed flow rate (frequency converter controlled), pressure and temperature
- max. 15 bar feed pressure
- manual or automatic pressure control
- protection against dry running and excess pressure
- sampling of feed, permeate and concentrate during the operation
- double walled tank
- number and form of membrane module according to your specification
- medium affected parts made of 1.4571 and/or 316L as well as PVC (also available in PP or PVDF if desired)
- compact construction
- complete operability in front range of plant
- fill level dependent, switchable outlet allows feed & bleed operation over valve or pump
- display of all measurements (pressure, temperature, concentrate flow rate) at plant
- industrial sensor technology with standard output signal (4...20 mA), free of backcoupling

SIMA-tec® GmbH

Vogelsrather Weg 1 • D-41366 Schwalmtal  
Fon / Fax +49 2163 34921-0 / -11  
info@sima-tec.de • www.sima-tec.de